

IRONMONGERY



 **West Port**
Bespoke Timber Windows, Doors & Fire Doorsets
IRONMONGERY

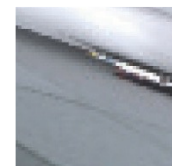
Ironmongery

To enhance the aesthetics of your windows and doors, West Port supply an extensive range of Traditional and Contemporary styles of ironmongery. These are all available in a selection of finishes to complement and personalise your home.

Ensure to contact us if you have any other requirements.

Contents

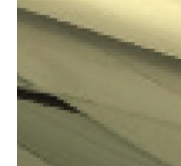
Door Ironmongery	4-7
Casement Window Ironmongery	8-9
Sash Window Ironmongery	10-11



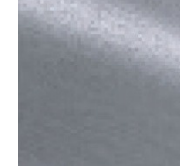
Chrome



Satin



Gold



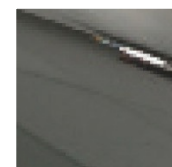
Graphite



Black



Silver



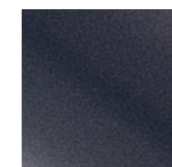
Bronze



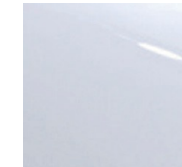
Forged Black



Antique Black



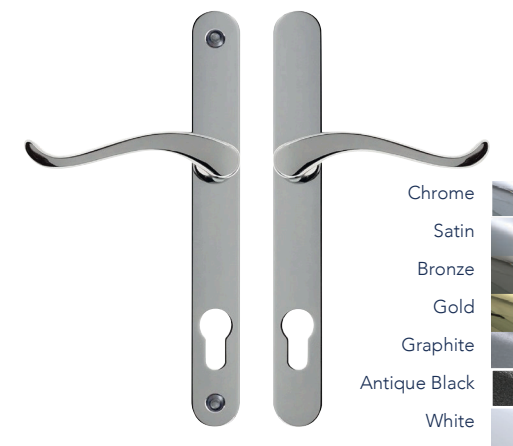
Anthracite Grey



White



Door Ironmongery

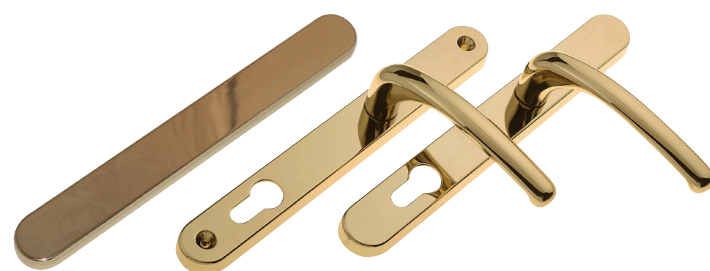
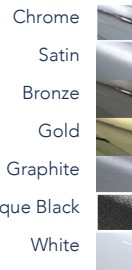


Sprung Swan Lever Door Handle

The Door Handle is a classic handle design, available in a range of finishes. The handle is endurance tested in excess of 200,000 cycles.

Features

- Solid die cast zinc construction for a sturdy feel
- Long baseplate with screw positions to suit most locks
- Ergonomic lever and low friction nylon bush, easy to grip and smooth action
- Left hand and right hand versions available.



Sprung Inline Lever Door Handle

The Door Handle is a classic handle design, available in a range of finishes. The handle is endurance tested in excess of 200,000 cycles.

Features

- Solid die cast zinc construction for a sturdy feel
- Long baseplate with screw positions to suit most locks
- Ergonomic lever and low friction nylon bush, easy to grip and smooth action
- Also available as a dummy lever & door blank plate.



Door Letterplate

Door Letterplate available in 10 finishes

Features

- Stylish and classic fully colour matched metal letterplate, optimal quality and durability
- Anti-snap flap opens to 180 degrees with a fully sprung return giving clear access for A4 mailings
- Fits doors 20mm - 80mm thick with Midrail and Panel options
- Fully weather sealed and outstanding acoustic insulation
- Tested to the highest technical standards

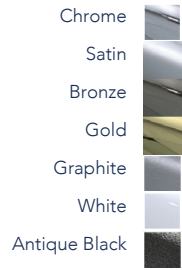


Sprung Inline DDA Lever Door Handle

The Inline Sprung DDA Lever Door Handle is designed to operate a Multi Point Lock with a Euro Cylinder. The Extended Lever gives an increased leverage to ease lock operation.

Features

- Solid die cast zinc construction for a sturdy feel
- Long baseplate with screw positions to suit most locks
- Extended returned lever and low friction nylon bush, easy to grip and smooth action

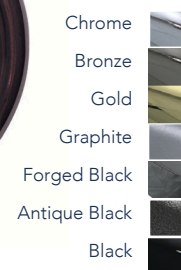


Bull Ring Door Knocker

The Bull Ring Door Knocker is available in a range of finishes.

Features

- Heritage Bull Ring design to create an elegant front door
- Patented face fixing plate suitable for timber doors
- Face fixing for easy installation and saves you drilling through the door
- Includes fixing bracket



Door Letters A-F & Numbers 0-9

Door Letters & Numbers available in a range of finishes.

Features

- Classic design with a contemporary twist to create an elegant and stylish front door
- Supplied with colour coordinated screws to ensure perfectly matching hardware, even down to the smallest detail

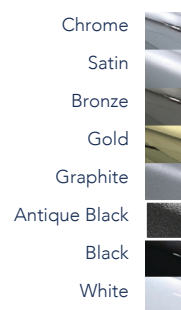


Urn Face Fix Door Knocker

Urn Door Knocker is available in a range of finishes.

Features

- Classic door knocker design to create an elegant and stylish door
- Patented face fixing plate suitable for Timber doors.
- Face fixing for easy installation and saves you drilling through the door.
- Available in medium, large and slim
- Available with and without spy hole, spy hole sold separately
- Includes fixing bracket

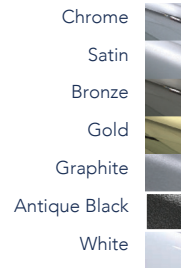


Lion's Head Door Knocker

The Lion's Head Door Knocker is available in a range of finishes.

Features

- Classic door knocker design to create an elegant and stylish door
- Patented face fixing plate suitable for Timber doors.
- Face fixing for easy installation and saves you drilling through the door.
- Includes fixing bracket



Door Ironmongery



Stainless Steel

Stainless Steel Door Escutcheon Square
The Stainless Steel Squared Escutcheon is a contemporary design. Tailored to meet both the needs of new and replacement markets.

Features

- Brushed stainless steel escutcheon with contemporary styling that creates a stunning entrance door
- Austenitic grade 304 stainless steel construction, ultimate corrosion resistance
- Security product, cannot be removed without the removal of the cylinder
- Matching escutcheon to suit euro profile cylinders. Compatible with all euro profile cylinders and key wind up locks
- Screw fixed product for maximum strength
- Suits to the Flat Stainless Steel Bar Handles

Stainless Steel Flat Inline Bar Door Handle
The Stainless Steel Flat Inline Bar Handles are a contemporary handle design. Tailored to meet both the needs of new and replacement markets.

Features

- Brushed stainless steel bar handles, contemporary handles that create a stunning entrance door
- Authentic grade 316 stainless steel construction, ultimate corrosion resistance
- Fixings included, to suit any application or material
- Matching escutcheon to suit Euro profile cylinders. Compatible with all Euro profile cylinders and key wind up locks
- Perfectly matching corners and precision joints, meticulously produced quality product
- In-line Flat handle, for a sleek straight aesthetic appearance

Stainless Steel



Stainless Steel Bar Door Handle
A 316 Stainless Steel Bar Handle is a ideal way to create a contemporary feel to a modern door. A choice of fixing packs are available.

Features

- Brushed stainless steel bar handles, contemporary handles that create a stunning entrance door
- Austenitic grade 316 stainless steel construction, ultimate corrosion resistance
- Fixing packs available to purchase separately
- Matching escutcheon to suit euro profile cylinders. Compatible with all euro profile cylinders and key wind up locks
- Perfectly matching corners and precision joints, meticulously produced quality product
- Asleek straight aesthetic appearance
- 400mm to 1800mm lengths available
- Inline and offset available

Stainless Steel



Satin
Chrome
Black

Euro Profile Round Escutcheon
A classic round escutcheon design tailored to meet both the needs of new and replacement markets.

Features

- 50mm rose diameter
- Fixings included



Chrome
Brass

Door Chains
Traditional sliding door chain. Chain has a breaking torque of over 200Nm giving extra security and peace of mind.

Features

- Available in brass and chrome finishes
- Frame attachment, door attachment & six fitting screws



Chrome
Gold
White
Black

Door Viewer
This quality viewer is constructed from a solid brass or aluminium body and three glass lenses to give crystal clear performance for many years.

Features

- Extends between 35 and 55mm to fit most door panels. 10mm and 20mm extension pieces are available offering further extension as required.



Chrome
Satin
Bronze
Gold
Graphite
Antique Black
Black
White
Forged Black
Anthracite Grey
Silver

Decorative Round Door Knob
The Decorative Round Door Knob is a classic design.

Features

- Solid die cast zinc construction for a sturdy feel
- Can be secret bracket fixed or through bolt fixed, all fixing options covered.
- Colour co-ordinated internal fixing bolt, for that final perfectly matching touch
- Bolt fixing can be cut to size, will suit all standard door depths
- Anti-rotation pins attached, for that secure fix

Casement Window Ironmongery



Chrome
Graphite
Gold
Antique Black

Monkey Tail Window Handle

The Monkey Tail handle is an elegant design inspired by 19th century ironmongery and ideally suited for heritage casement windows for a classic finish for use with an espagnolette window lock.

Features

- Manufactured from zinc with a specially formulated finish for a tough hard wearing finish
- Available in right hand and left hand versions



Chrome
Graphite
Gold
Antique Black

Monkey Tail Operating Window Stay Bar

The Monkey Tail Stay is an elegant design inspired by 19th century ironmongery and ideally suited for heritage casement windows for a classic finish for use with a Monkey Tail espagnolette handle.

Features

- Moveable 10" Monkey Tail Operating Stay Bar
- Manufactured from zinc with a specially formulated finish for a tough hard wearing finish
- Suitable for both left and right handed windows
- Also available with a dummy stay



Chrome
Gold
Antique Black
Graphite

Tear Drop Window Handle

The Tear Drop handle is an elegant design inspired by 19th century ironmongery and ideally suited for heritage casement windows for a classic finish for use with an espagnolette window lock.

Features

- Manufactured from zinc with a specially formulated finish for a tough hard wearing finish
- Available in right hand and left hand versions



Chrome
Gold
Antique Black
Graphite

Tear Drop Operating Window Stay Bar, 54mm

The Tear Drop Stay is an elegant design inspired by 19th century ironmongery and ideally suited for heritage casement windows for a classic finish for use with a Teardrop espagnolette handle.

Features

- Moveable 10" Monkey Tail Operating Stay Bar
- Manufactured from zinc with a specially formulated finish for a tough hard wearing finish
- Suitable for both left and right handed windows
- Also available with a dummy stay



Chrome
Satin
Bronze
Gold
Graphite
Antique Black
Anthracite Grey
Black
White
Silver

Connoisseur Offset Locking Window Handle

The Offset has a classic design with a contemporary twist to create an elegant and stylish window handle for an espagnolette window lock. The perfect choice for all Casement Windows.

Features

- Curved handle for creating an aesthetic looking window, available as left and right handed
- Ergonomically designed, the handle is push to open with key deadlocking for security
- Heavy duty sprung latch creates a positive click on closing giving you peace of mind the window is locked



Chrome
Satin
Gold
Black

Tokyo Cranked Espagnolette Handle

The cranked design enhances the ergonomics of the handle allowing increased knuckle clearance. The cranked feature means that the handles are left and right handed. These handles are manufactured from cast aluminium, the handle is supplied as locking as standard

Features

- An additional cylinder cap including green for emergency exits only to convert the handle to non-locking/egress operation.
- Positive stop at 90°
- Push cylinder button to open
- Handle latches automatically when closed
- Cylinder can be deadlocked with the key

Breakseal Locking Casement Window Handle

Heavyweight locking breakseal cockspur handle with a sturdy feel in a classic design with a contemporary twist to create an elegant and stylish window. Ensures your window is tightly sealed.

Features

- Heavyweight locking handle with a sturdy feel and a solid die cast construction
 - Perfectly matching slimline and standard keeps available; compatible with various frame section configurations
- ** Only available on our dual swing windows, not compatible with casements

Chrome
Satin
Bronze
Gold
Antique Black
White



Chrome
Satin
Bronze
Gold
Antique Black
White

Breakseal Casement Window Handle Keep

Keep to suit Breakseal Casement Window Handles.

Features

- The handles nose locates into the keep ensuring the window is tightly seal and closed
 - Available in standard and slimline. Compatible with various frame section configurations
- ** Only available on our dual swing windows, not compatible with casements



Sash Window Ironmongery

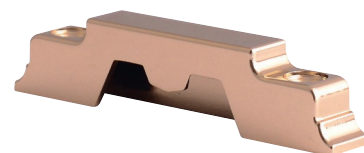


Standard Cam Lock

Classically designed standard Cam Lock that sits discreetly on the window with key deadlocking. Available with a suited Bottom Sash Knob for a perfectly matching window.

Features

- Key locking for enhanced security
- Supplied with colour coordinated screws to ensure perfectly matching hardware, even down to the smallest detail



Standard Cam Lock Keep

Cam Lock Keeps suitable for all Standard or High Security Cam Locks.

Features

- Available in 8mm or 11mm
- Supplied with colour coordinated screws to ensure perfectly matching hardware, even down to the smallest detail



Sash Eye Inline & Offset

Inline & Offset Sash Window Ring Pull or Sash Eye aesthetically designed with a sturdy feel to operate vertical sliding windows.

Features

- Available to suit all types of sliding sash window applications
- Supplied with colour coordinated screws to ensure perfectly matching hardware, even down to the smallest detail



Sash Handle (Bow)

Sash Window Bow Handle aesthetically designed with a sturdy feel to operate vertical sliding windows.

Features

- Available to suit all types of sliding sash window applications
- Supplied with colour coordinated screws to ensure perfectly matching hardware, even down to the smallest detail



1 3/4" Round Sash Pulley for Cord

It comprises a solid brass faceplate which is polished to a mirror finish. This faceplate is attached invisibly to a galvanised steel frame. The axle pin is zinc plated.

Features

- Brass rollers incorporate high quality ball bearings
- Round groove for cord and round ends
- Brass (PVD) faceplate
- Also available in Brass/Steel, Chrome and Satin Chrome



Bottom Sash Knob

Bottom sash knob aesthetically designed to operate and tilt sashes on vertical sliding sash windows.

Features

- Suits all types of sliding sash window applications



Sash Hook Pull

Sash hook pull is aesthetically designed with a sturdy feel to operate vertical sliding windows.

Features

- Available to suit all types of sliding sash window applications
- Supplied with colour coordinated screws to ensure perfectly matching hardware, even down to the smallest detail



Take the Tour

Come and visit us and take the factory tour and understand why our customers choose West Port.

Visit our website

Visit our website to learn more about our products, services, accreditation and what makes West Port stand out from our competition www.west-port.co.uk



Contact Us

Address:

The New West Port Corporation Ltd
15 Solway Industrial Estate
Maryport
Cumbria
CA15 8NF
Phone: 01900 814225
Email: sales@west-port.co.uk
Web: www.west-port.co.uk