

**IRONMONGERY**



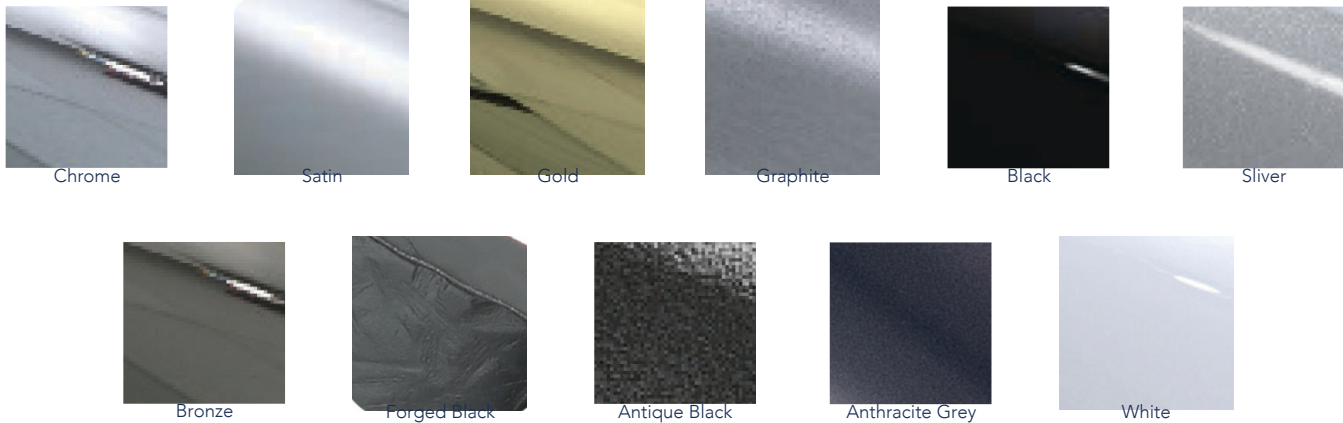


Ironmongery

To enhance the aesthetics of your windows and doors, West Port supply an extensive range of Traditional and Contemporary styles of ironmongery. These are all available in a selection of finishes to complement and personalise your home. Ensure to contact us if you have any other requirements.

Contents

Door Ironmongery .....4-7  
Casement Window Ironmongery .....8-9  
Sash Window Ironmongery .....10-11





# Door Ironmongery



## Sprung Swan Lever Door Handle

The Door Handle is a classic handle design, available in a range of finishes. The handle is endurance tested in excess of 200,000 cycles.

### Features

- Solid die cast zinc construction for a sturdy feel
- Long baseplate with screw positions to suit most locks
- Ergonomic lever and low friction nylon bush, easy to grip and smooth action
- Left hand and right hand versions available.



## Door Letterplate

Door Letterplate available in 10 finishes

### Features

- Stylish and classic fully colour matched metal letterplate, optimal quality and durability
- Anti-snap flap opens to 180 degrees with a fully sprung return giving clear access for A4 mailings
- Fits doors 20mm - 80mm thick with Midrail and Panel options
- Fully weather sealed and outstanding acoustic insulation
- Tested to the highest technical standards



## Bull Ring Door Knocker

The Bull Ring Door Knocker is available in a range of finishes.

### Features

- Heritage Bull Ring design to create an elegant front door
- Patented face fixing plate suitable for timber doors
- Face fixing for easy installation and saves you drilling through the door
- Includes fixing bracket



## Urn Face Fix Door Knocker

Urn Door Knocker is available in a range of finishes.

### Features

- Classic door knocker design to create an elegant and stylish door
- Patented face fixing plate suitable for Timber doors.
- Face fixing for easy installation and saves you drilling through the door.
- Available in medium, large and slim
- Available with and without spy hole, spy hole sold separately
- Includes fixing bracket



## Sprung Inline Lever Door Handle

The Door Handle is a classic handle design, available in a range of finishes. The handle is endurance tested in excess of 200,000 cycles.

### Features

- Solid die cast zinc construction for a sturdy feel
- Long baseplate with screw positions to suit most locks
- Ergonomic lever and low friction nylon bush, easy to grip and smooth action
- Also available as a dummy lever & door blank plate.



## Sprung Inline DDA Lever Door Handle

The Inline Sprung DDA Lever Door Handle is designed to operate a Multi Point Lock with a Euro Cylinder. The Extended Lever gives an increased leverage to ease lock operation.

### Features

- Solid die cast zinc construction for a sturdy feel
- Long baseplate with screw positions to suit most locks
- Extended returned lever and low friction nylon bush, easy to grip and smooth action



## Door Letters A-F & Numbers 0-9

Door Letters & Numbers available in a range of finishes.

### Features

- Classic design with a contemporary twist to create an elegant and stylish front door
- Supplied with colour coordinated screws to ensure perfectly matching hardware, even down to the smallest detail



## Lion's Head Door Knocker

The Lion's Head Door Knocker is available in a range of finishes.

### Features

- Classic door knocker design to create an elegant and stylish door
- Patented face fixing plate suitable for Timber doors.
- Face fixing for easy installation and saves you drilling through the door.
- Includes fixing bracket

# Door Ironmongery



Stainless Steel

## Stainless Steel Door Escutcheon Square

The Stainless Steel Squared Escutcheon is a contemporary design. Tailored to meet both the needs of new and replacement markets.

- Features**
- Brushed stainless steel escutcheon with contemporary styling that creates a stunning entrance door
  - Austenitic grade 304 stainless steel construction, ultimate corrosion resistance
  - Security product, cannot be removed without the removal of the cylinder
  - Matching escutcheon to suit euro profile cylinders. Compatible with all euro profile cylinders and key wind up locks
  - Screw fixed product for maximum strength
  - Suits to the Flat Stainless Steel Bar Handles

## Stainless Steel Flat Inline Bar Door Handle

The Stainless Steel Flat Inline Bar Handles are a contemporary handle design. Tailored to meet both the needs of new and replacement markets.

- Features**
- Brushed stainless steel bar handles, contemporary handles that create a stunning entrance door
  - Authentic grade 316 stainless steel construction, ultimate corrosion resistance
  - Fixings included, to suit any application or material
  - Matching escutcheon to suit Euro profile cylinders. Compatible with all Euro profile cylinders and key wind up locks
  - Perfectly matching corners and precision joints, meticulously produced quality product
  - In-line Flat handle, for a sleek straight aesthetic appearance

Stainless Steel



## Stainless Steel Bar Door Handle

A 316 Stainless Steel Bar Handle is a ideal way to create a contemporary feel to a modern door. A choice of fixing packs are available.

- Features**
- Brushed stainless steel bar handles, contemporary handles that create a stunning entrance door
  - Austenitic grade 316 stainless steel construction, ultimate corrosion resistance
  - Fixing packs available to purchase separately
  - Matching escutcheon to suit euro profile cylinders. Compatible with all euro profile cylinders and key wind up locks
  - Perfectly matching corners and precision joints, meticulously produced quality product
  - Asleek straight aesthetic appearance
  - 400mm to 1800mm lengths available
  - Inline and offset available

Stainless Steel



Satin  
Chrome  
Black

## Euro Profile Round Escutcheon

A classic round escutcheon design tailored to meet both the needs of new and replacement markets.

- Features**
- 50mm rose diameter
  - Fixings included



Chrome  
Brass

## Door Chains

Traditional sliding door chain. Chain has a breaking torque of over 200Nm giving extra security and peace of mind.

- Features**
- Available in brass and chrome finishes
  - Frame attachment, door attachment & six fitting screws



Chrome  
Satin  
Bronze  
Gold  
Graphite  
Antique Black  
Black  
White  
Forged Black  
Anthracite Grey  
Silver

## Decorative Round Door Knob

The Decorative Round Door Knob is a classic design.

- Features**
- Solid die cast zinc construction for a sturdy feel
  - Can be secret bracket fixed or through bolt fixed, all fixing options covered.
  - Colour co-ordinated internal fixing bolt, for that final perfectly matching touch
  - Bolt fixing can be cut to size, will suit all standard door depths
  - Anti-rotation pins attached, for that secure fix



## Door Viewer

This quality viewer is constructed from a solid brass or aluminium body and three glass lenses to give crystal clear performance for many years.

- Features**
- Extends between 35 and 55mm to fit most door panels. 10mm and 20mm extension pieces are available offering further extension as required.



# Casement Window Ironmongery



- Chrome
- Graphite
- Gold
- Antique Black

## Monkey Tail Window Handle

The Monkey Tail handle is an elegant design inspired by 19th century ironmongery and ideally suited for heritage casement windows for a classic finish for use with an espagnolette window lock.

- Features**
- Manufactured from zinc with a specially formulated finish for a tough hard wearing finish
  - Available in right hand and left hand versions

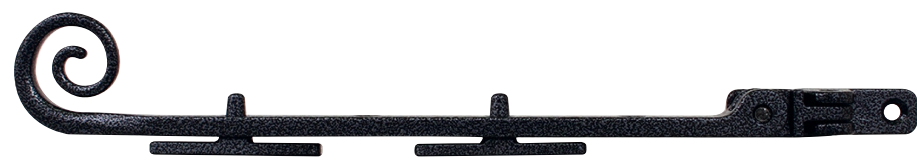


- Chrome
- Gold
- Antique Black
- Graphite

## Tear Drop Window Handle

The Tear Drop handle is an elegant design inspired by 19th century ironmongery and ideally suited for heritage casement windows for a classic finish for use with an espagnolette window lock.

- Features**
- Manufactured from zinc with a specially formulated finish for a tough hard wearing finish
  - Available in right hand and left hand versions



- Chrome
- Graphite
- Gold
- Antique Black

## Monkey Tail Operating Window Stay Bar

The Monkey Tail Stay is an elegant design inspired by 19th century ironmongery and ideally suited for heritage casement windows for a classic finish for use with a Monkey Tail espagnolette handle.

- Features**
- Moveable 10" Monkey Tail Operating Stay Bar
  - Manufactured from zinc with a specially formulated finish for a tough hard wearing finish
  - Suitable for both left and right handed windows
  - Also available with a dummy stay



- Chrome
- Gold
- Antique Black
- Graphite

## Tear Drop Operating Window Stay Bar, 54mm

The Tear Drop Stay is an elegant design inspired by 19th century ironmongery and ideally suited for heritage casement windows for a classic finish for use with a Teardrop espagnolette handle.

- Features**
- Moveable 10" Monkey Tail Operating Stay Bar
  - Manufactured from zinc with a specially formulated finish for a tough hard wearing finish
  - Suitable for both left and right handed windows
  - Also available with a dummy stay



- Chrome
- Satin
- Bronze
- Gold
- Graphite
- Antique Black
- Anthracite Grey
- Black
- White
- Sliver

## Connoisseur Offset Locking Window Handle

The Offset has a classic design with a contemporary twist to create an elegant and stylish window handle for an espagnolette window lock. The perfect choice for all Casement Windows.

- Features**
- Curved handle for creating an aesthetic looking window, available as left and right handed
  - Ergonomically designed, the handle is push to open with key deadlocking for security
  - Heavy duty sprung latch creates a positive click on closing giving you peace of mind the window is locked



- Chrome
- Satin
- Bronze
- Gold
- Antique Black
- White

## Breakseal Locking Casement Window Handle

Heavyweight locking breakseal cockspur handle with a sturdy feel in a classic design with a contemporary twist to create an elegant and stylish window. Ensures your window is tightly sealed.

- Features**
- Heavyweight locking handle with a sturdy feel and a solid die cast construction
  - Perfectly matching slimline and standard keeps available; compatible with various frame section configurations
  - \*\* Only available on our dual swing windows, not compatible with casements



- Chrome
- Satin
- Bronze
- Gold
- Antique Black
- White

## Breakseal Casement Window Handle Keep

Keep to suit Breakseal Casement Window Handles.

- Features**
- The handles nose locates into the keep ensuring the window is tightly seal and closed
  - Available in standard and slimline. Compatible with various frame section configurations
  - \*\* Only available on our dual swing windows, not compatible with casements



# Sash Window Ironmongery

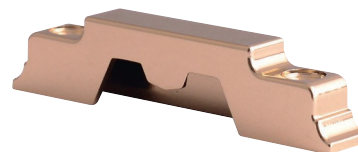


## Standard Cam Lock

Classically designed standard Cam Lock that sits discreetly on the window with key deadlocking. Available with a suited Bottom Sash Knob for a perfectly matching window.

**Features**

- Key locking for enhanced security
- Supplied with colour coordinated screws to ensure perfectly matching hardware, even down to the smallest detail



## Standard Cam Lock Keep

Cam Lock Keeps suitable for all Standard or High Security Cam Locks.

**Features**

- Available in 8mm or 11mm
- Supplied with colour coordinated screws to ensure perfectly matching hardware, even down to the smallest detail

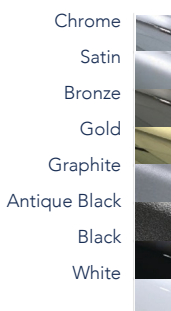


## Sash Eye Inline & Offset

Inline & Offset Sash Window Ring Pull or Sash Eye aesthetically designed with a sturdy feel to operate vertical sliding windows.

**Features**

- Available to suit all types of sliding sash window applications
- Supplied with colour coordinated screws to ensure perfectly matching hardware, even down to the smallest detail



## Sash Handle (Bow)

Sash Window Bow Handle aesthetically designed with a sturdy feel to operate vertical sliding windows.

**Features**

- Available to suit all types of sliding sash window applications
- Supplied with colour coordinated screws to ensure perfectly matching hardware, even down to the smallest detail

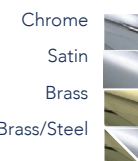


## 1 3/4 inch Round Sash Pulley for Cord

It comprises a solid brass faceplate which is polished to a mirror finish. This faceplate is attached invisibly to a galvanised steel frame. The axle pin is zinc plated.

**Features**

- Brass rollers incorporate high quality ball bearings
- Round groove for cord and round ends
- Brass (PVD) faceplate
- Also available in Brass/Steel, Chrome and Satin Chrome



## Bottom Sash Knob

Bottom sash knob aesthetically designed to operate and tilt sashes on vertical sliding sash windows.

**Features**

- Suits all types of sliding sash window applications

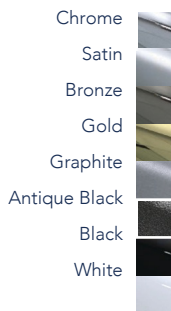


## Sash Hook Pull

Sash hook pull is aesthetically designed with a sturdy feel to operate vertical sliding windows.

**Features**

- Available to suit all types of sliding sash window applications
- Supplied with colour coordinated screws to ensure perfectly matching hardware, even down to the smallest detail







### Take the Tour

Come and visit us and take the factory tour and understand why our customers choose West Port.

### Visit our website

Visit our website to learn more about our products, services, accreditation and what makes West Port stand out from our competition [www.west-port.co.uk](http://www.west-port.co.uk)



### Contact Us

#### Address:

The New West Port Corporation Ltd  
15 Solway Industrial Estate  
Maryport  
Cumbria  
CA15 8NF  
Phone: 01900 814225  
Email: [sales@west-port.co.uk](mailto:sales@west-port.co.uk)  
Web: [www.west-port.co.uk](http://www.west-port.co.uk)