

Allerburn Manor, Alnwick

Bespoke Arched Flush Casement and Circular Window

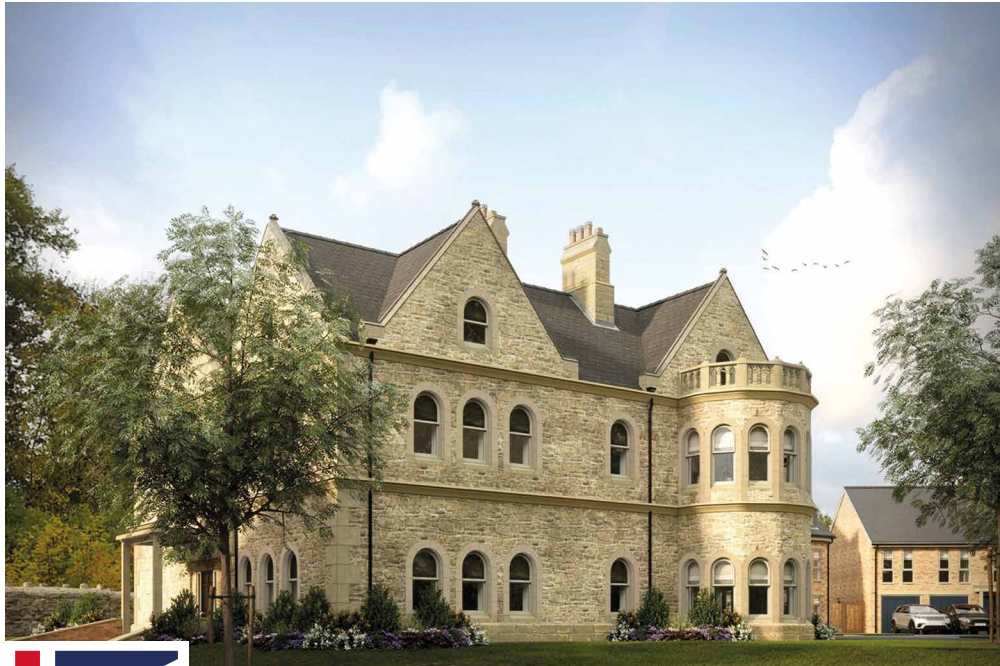
The Site

Situated on the site of the former Alnwick District Council offices, Allerburn Manor will feature 16 new executive properties. The latest development from Ascent Homes in picturesque Alnwick will feature a mix of 4 and 5 bedroom luxury properties. This development of properties is the perfect solution for those looking for a mix of traditional and modern living.

Originally a residential dwelling, Allerburn Manor, designed by F. R. Wilson, dates from 1862. Despite Allerburn Manor not being a listed building, it is considered that the House itself and its grounds make an important contribution to the heritage, character and appearance of the area. The site is located on the north-eastern edge of Alnwick and is situated east of The Alnwick Gardens.



West Port
Bespoke Timber Windows, Doors & Fire Doorsets
CASE STUDIES



Alnwick will soon be home to a stunning new development.

The Client



Ascent Homes is the house building division of Advance Northumberland, an economic regeneration company based in Northumberland. Working in partnership with Northumberland County Council they are making a considerable impact on the county's residential property market, by developing high-quality homes in desirable locations.

Ascent Homes has developed a wide range of properties, working in conjunction with their partners and landowners they have supported. They pride themselves in using local labour and craftsmen for the majority of its work. Ascent Homes' manages and builds properties that are a testament to their commitment to Northumberland's communities.

Advance Northumberland's other divisions develop a wide range of projects from large scale manufacturing units, purpose-built offices, major town Centre redevelopments to family houses and affordable homes. Experienced project managers with in the business deliver complex solutions in challenging stakeholder environments across commercial, industrial, residential, leisure, health, transport and infrastructure sectors.



West Port
Bespoke Timber Windows, Doors & Fire Doorsets
CASE STUDIES



West Port
Bespoke Timber Windows, Doors & Fire Doorsets
CASE STUDIES





West Port
Bespoke Timber Windows, Doors & Fire Doorsets
CASE STUDIES

The Solution

West Port were asked to quote for the manufacture and supply of timber flush casement windows for Allerburn Manor, a 62 window project that needed a sympathetic approach to the aesthetics of this historic building.

The West Port flush casement window with a semi-circular arch was settled on as the most suitable style, ensuring clean lines, modern design, good thermal efficiency and that traditional feel that only timber can provide.

Once asked to quote a West Port surveyor attended site to review and support a previous survey supplied by the client. The apertures were measured and the semi-circle was confirmed as a true arch. Measurements were taken on the exterior of the building for each window aperture and a standard reached to allow for a small number of variations based on similar heights and widths.





Engineered timber from Estonia is delivered into the 175,000 sq ft factory in Maryport, a small coastal town on the Solway coast of North West Cumbria. Here the timber is processed through a series of manufacturing processes that craft a modern high tech thermally efficient timber window ready for their installation into the historic Allerburn Manor in Alnwick, Northumberland.

The primary machining team cuts, shapes and routers the frame and sash profiles ready for assembly ensuring tight tolerances are met. The skilled craftsmen in the joiner's shop prepare the blanks from multiple blocks of timber using our own finger jointing process. Once cured the arch of the frame and the curved bead for the fixed top window are cut on the CNC machine ensuring an accurate fit. Cramps and de-nib teams complete the construction process of the frame and sash preparing them for painting.

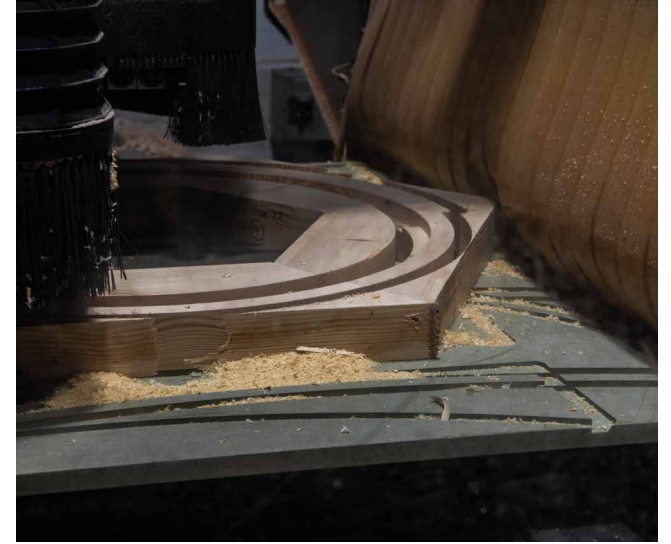
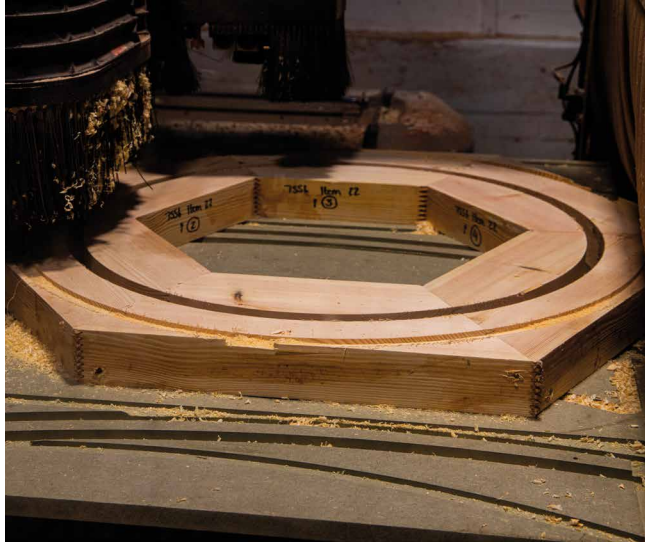


West Port
Bespoke Timber Windows, Doors & Fire Doorsets
CASE STUDIES



Our high-tech electrostatic paint facility uses a German paint from Remmers that is breathable on a microscopic level. The Remmers Induline paint finish provides long-term protection with uniform weathering, no flaking and protects against mould and algae. Following a prime coat; a dual colour paint finish is applied which is a different colour on the exterior with another colour on the interior. The automated paint carousel carries the painted timber window components through a dedicated drying tunnel, where a quality control process is carried out.

The window frames, sashes and glazing beads move to the assembly line where they are fitted with ironmongery and weather seals in this case hinges, handles & seals are all in white creating a clean stylish look. High thermal performance double glazed panels are fitted along with matching bead, finally a weather sealant is applied and the completed windows are secured to pallets and packed for dispatch to site.

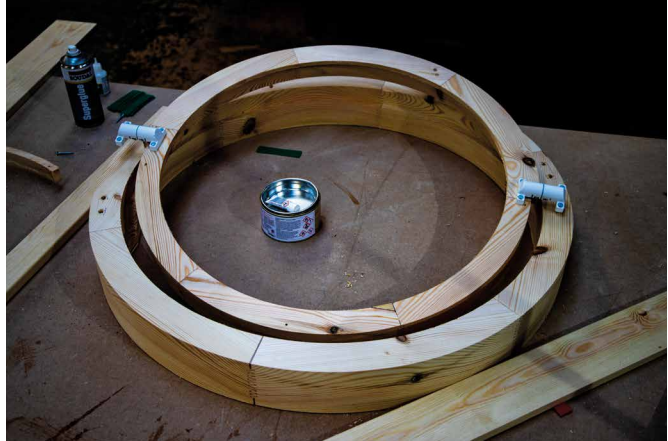


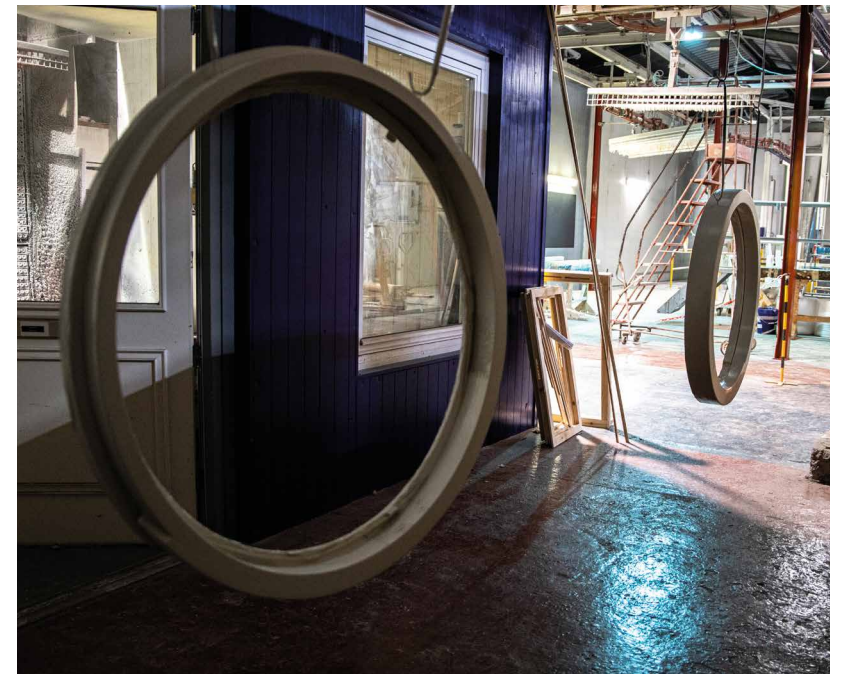
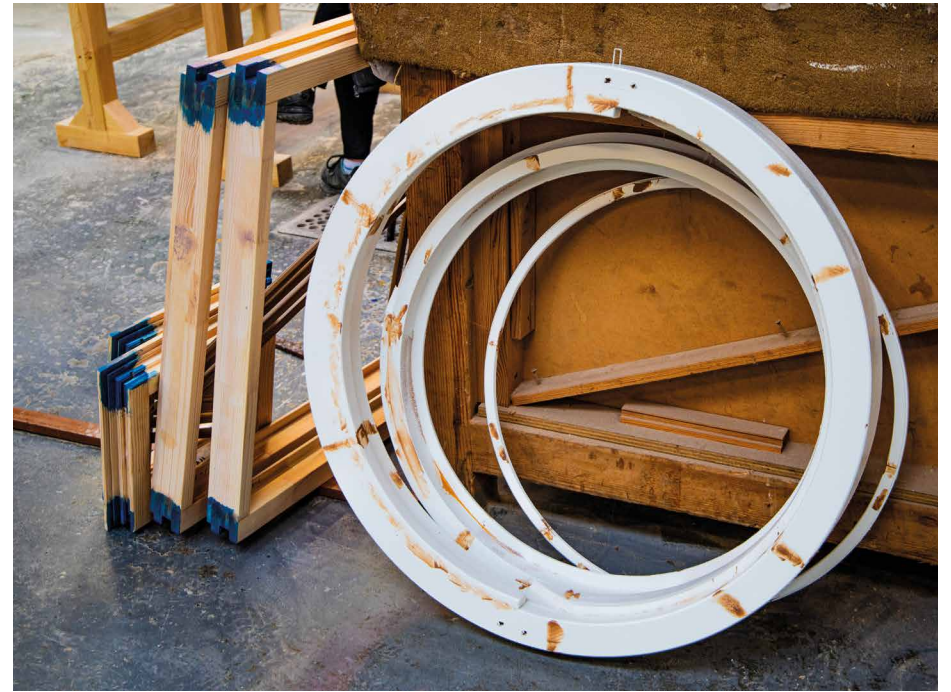
West Port
Bespoke Timber Windows, Doors & Fire Doorsets
CASE STUDIES

TB-75 TB-70



West Port
Bespoke Timber Windows, Doors & Fire Doorsets
CASE STUDIES





West Port
Bespoke Timber Windows, Doors & Fire Doorsets
CASE STUDIES

The circular window follows a very similar process where the aperture on-site is measured and our CAD technician draws both plan and section drawings that used by the CNC operator to cut the frame, sash, plant-ons and glazing bead. These items are then assembled in the joiners shop to ensure the tight tolerances account for painting. Both pivot hinges and finger pull latches are dry fitted and removed.

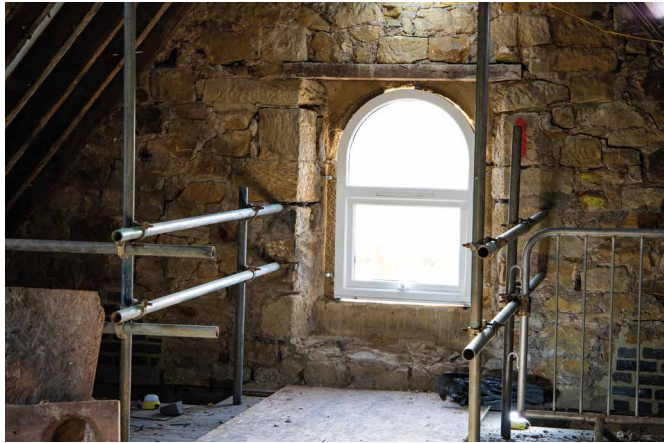
The process of de-nib, primer, paint are carefully completed with the final stage of assembly, glazing, packing and dispatch all following the same journey as the arched windows.

From start to finish the West Port team take considerable pride in each stage delivering what we consider to be a high quality product for the modern market place...



West Port
Bespoke Timber Windows, Doors & Fire Doorsets
CASE STUDIES





West Port
Bespoke Timber Windows, Doors & Fire Doorsets
CASE STUDIES



H&W JOINERY INSTALLATION LTD

35 Years Experience Installing Joinery.

The Installation

Stephen Wiseley and Simon Holt at H & W Joinery carry out all aspects of joinery, first & second fix along with remedial work. They specialise in the installation of premium quality bespoke windows & door sets and travel across the UK providing a quick and efficient service. In a short discussion post install Stephen and Simon highlighted the following:

- Packaging & palletised securely, this always gives us good vibes when coming on to a job this also makes on-site storage simple and easy it's an early indicator that both the manufacturer and the customer have taken care to look after the product.
- We fit everything by laser level, it's quick and insures an accurate fit, this is where an accurate survey helps, this was done to a high standard as all the windows were a good fit. This is a massive plus given the age of the building.
- There was good clear labelling, this also really important and prevents the wrong window being installed in to the wrong aperture.
- The windows are well manufactured with high quality hinges and ironmongery, these had been adjusted and calibrated at the point of manufacture as there was little to no adjustment required on the West Port products.

We are always happy to be fitting West Port products, much easier than some other brands...

West Port

Bespoke Timber Windows, Doors & Fire Doorsets

CASE STUDIES





West Port
Bespoke Timber Windows, Doors & Fire Doorsets
CASE STUDIES

Customer Testimonial:

"As a seasoned house builder, Ascent Homes has had the privilege of working on numerous projects, each with its unique character and demands.

However, our most recent development required a timber window and door manufacturer on Allerburn Manor, a historic country house in Alnwick, Northumberland.

West Port based in Maryport, lead on this project, where their meticulous craftsmanship and commitment to excellence have transformed Allerburn Manor. The project involved the installation of 62 flush casement timber windows and a singular circular window, these windows are a critical component in preserving the manor's heritage while seamlessly integrating modern functionality.

We wholeheartedly recommend West Port, their commitment to excellence is a beacon in our industry."

Paul Errington

Director of Ascent Homes



West Port
Bespoke Timber Windows, Doors & Fire Doorsets
CASE STUDIES

“We wholeheartedly recommend West Port, their commitment to excellence is a beacon in our industry.”

Paul Errington - Director of Ascent Homes